

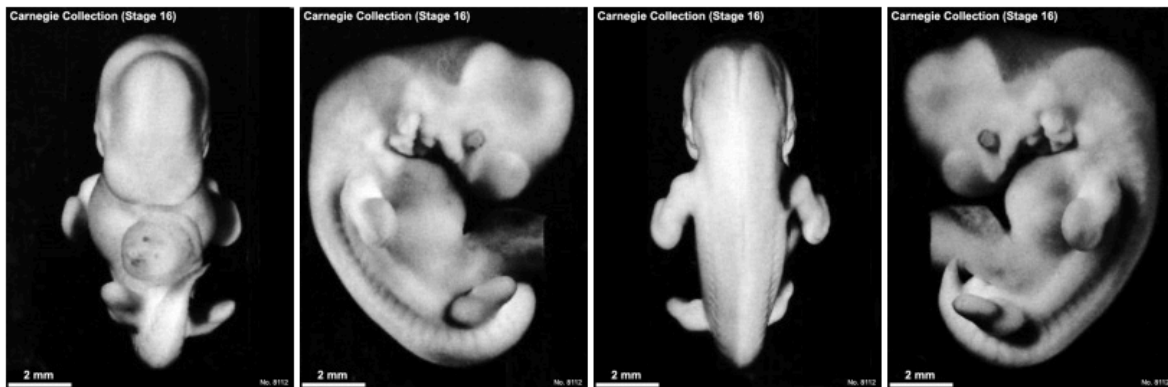
K12 Comparative Embryology

Exercise 3 – Embryo Comparison

The images below show the 4 views of the same embryo at about the same external stage of development.

- The human embryo - photographs from the historic Carnegie collection early 1900's.
- The mouse embryo - recent magnetic resonance images (MRI) from a 2006 research paper.

Human



37 - 42 days, Week 6, 8 - 11 mm CRL (Carnegie stage 16)

Mouse



11.5 days, Week 2, 6 - 7 mm CRL (Theiler Stage 19)

1. Both embryos are shown at about the same size (magnification). What is the actual difference in size between these two embryos?
2. How many days difference are there between the mouse and human embryo to reach the same external appearance?
3. Label the common external features you can identify on both embryos.
4. What is the embryonic origin of the outer surface (skin) of both embryos?