

# SH Lecture - Respiratory System Development

Embryology (/embryology/index.php/Main\_Page) - 24 Feb 2019 [Facebook](#) (/embryology/index.php/File:Facebook\_16x16.png) [Pinterest](#) (/embryology/index.php/File:Pinterest\_16x16.png) [Twitter](#) (/embryology/index.php/File:Twitter\_16x16.png) [Expand to Translate](#)

[Exp



## Introduction



(/embryology/index.php/File:SHsmall.jpg)

The lecture will introduce the development of the respiratory system and associated structures. The lecture **will not cover** adult anatomy, physiology of gas exchange, red blood cell function, cardiovascular development and will leave detailed histology to your associated practical class.



(/embryology/index.php/File:Mark\_Hill.jpg)

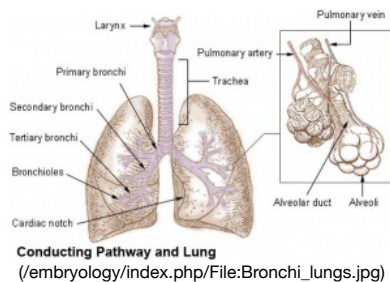


Fetal Head (12 week)  
(/embryology/index.php/File:Fetal\_head\_sec  
Fetal Pharynx (week 12)

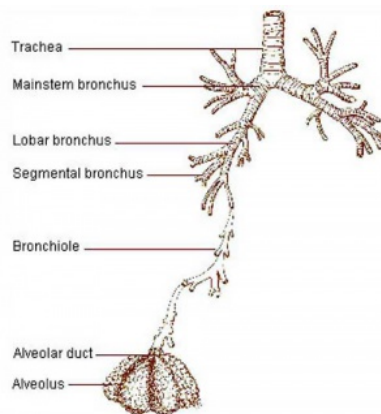
Current research suggests that both genetic and the developmental environment (fetal and postnatal) can influence the growth, differentiation and function of the respiratory system.

### Lower respiratory tract

### Respiratory tree



Conducting Pathway and Lung  
(/embryology/index.php/File:Bronchi\_lungs.jpg)



(/embryology/index.php/File:Respiratory\_tract.jpg)

2018 Respiratory Development Lecture PDF (/embryology/images/4/40/SH\_Lecture\_2018\_-\_Respiratory\_System\_Development.pdf)

Lecture Archive [\[Expand\]](#)

**SH Links:** Lymphatic Lecture (/embryology/index.php/SH\_Lecture\_-\_Lymphatic\_Structure\_and\_Organs) | Lymphatics Practical Support (/embryology/index.php/SH\_Practical\_-\_Lymphatic\_Structure\_and\_Organs) | Respiratory Lecture | Respiratory Practical Support (/embryology/index.php/SH\_Practical\_-\_Respiratory) | Medicine (/embryology/index.php/Medicine)

The respiratory system does not carry out its physiological function (of gas exchange) until after birth, though the respiratory tract, diaphragm and lungs do begin to form early in embryonic development and continue through fetal development, only functionally maturing just before birth. The lungs continue to grow postnatally through childhood and some research findings suggest that there remains potential for growth in the adult.

The respiratory tract is divided anatomically into 2 main parts:

1. **upper respiratory tract** - consisting of the nose, nasal cavity and the pharynx.
2. **lower respiratory tract** - consisting of the larynx, trachea, bronchi and the lungs.

The respiratory "system" usually includes descriptions of not only the functional development of the lungs, but also related musculoskeletal (diaphragm) and vascular (pulmonary) development.

## Aim

To understand the prenatal and postnatal developmental anatomy of human respiratory organs.

Textbooks [\[Expand\]](#)

## Key Concepts

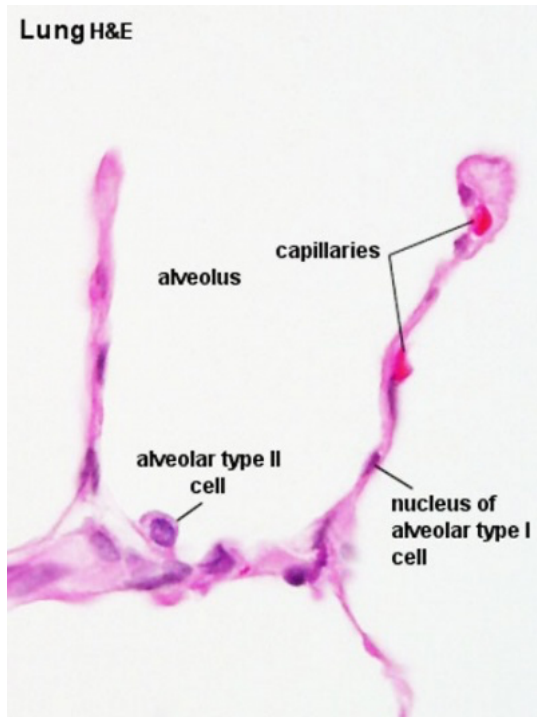
1. upper and lower respiratory tract.
2. Embryonic origin of respiratory components (tract, lungs, diaphragm, muscle).
3. Key stages in respiratory development.
4. Time course of respiratory development.
5. Respiration at birth.
6. Postnatal development of respiration.

## 7. Developmental abnormalities.

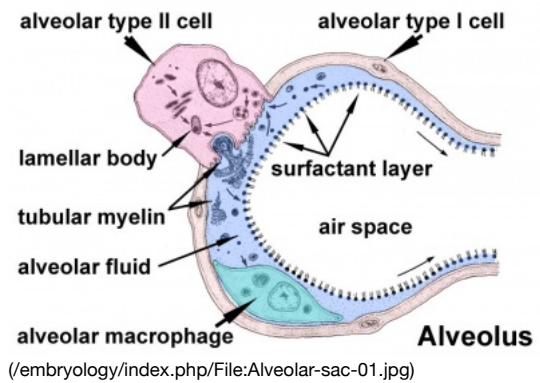
# Respiratory Functional Unit

## Alveolus

**Alveolus** (Latin *alveolus* = "little cavity", plural is alveoli)



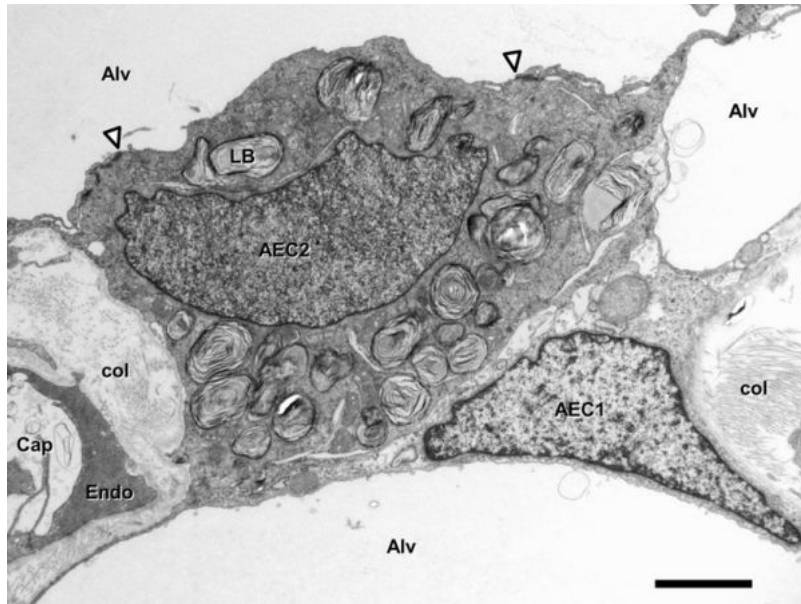
(/embryology/index.php/File:Respiratory\_histology\_03.jpg)  
Alveolus histology



(/embryology/index.php/File:Alveolar-sac-01.jpg)

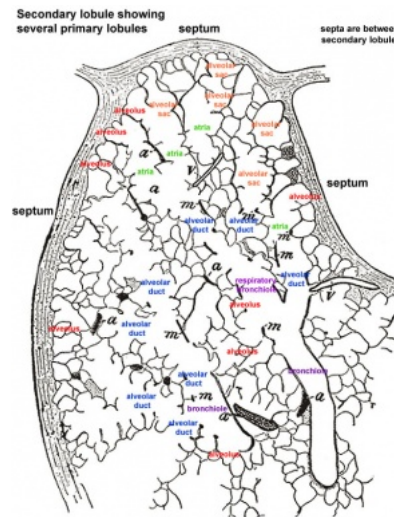
Alveolus structure

### Inter-Alveolar Septum<sup>[6]</sup>



(/embryology/index.php/File:Human\_lung\_inter-alveolar\_septum\_em01.jpg)

Septum containing Type I (AEC1) and type II (AEC2) alveolar epithelial cell, alveolar lumen (Alv), capillary lumen (Cap), capillary endothelial cell (Endo). Lamellar bodies (LB) in type II cell. Arrowheads mark tight junctions between type II and type I cell. Collagen fibrils (col) are present in the interstitium. Transmission electron microscopy. Scale bar 2  $\mu$ m



(/embryology/index.php/File:Lung\_secondary\_lobule\_01.jpg)

- ### Secondary Lobule

- region supplied by a **terminal bronchiole**
- size - up to 2.5 cm across.
- connective tissue - bounded by fibrous (interlobular) septa and containing finer internal
- lobule contains a up to 12 acini and 30 - 50 primary lobules  
([http://embryology/index.php/File:Lung\\_primary\\_lobule\\_01.jpg](http://embryology/index.php/File:Lung_primary_lobule_01.jpg)).
- blood supply - pulmonary artery branch
- blood drainage - pulmonary veins located at lobule periphery leave through the interlobular septa.
- lymphatics - arterial and interlobular septa associated (drain to subpleural plexus).

## Germ Layers

- Endoderm and splanchnic mesoderm form majority of conducting and alveoli.
- Ectoderm will contribute the neural innervation.
- Mesoderm also contributes the supporting musculoskeletal components.

**Week 4** - laryngotracheal groove forms on floor foregut.

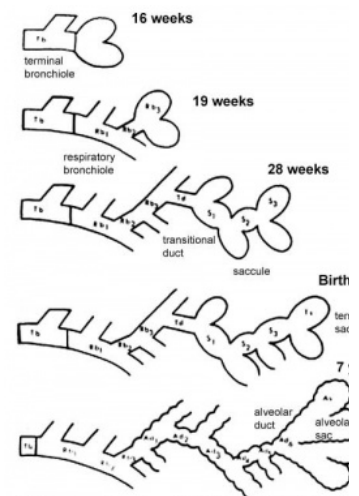
**Week 5** - left and right lung buds push into the pericardioperitoneal canals (primordia of pleural cavity)

**Week 6** - descent of heart and lungs into thorax. Pleuroperitoneal foramen closes.

**Week 7** - enlargement of liver stops descent of heart and lungs.

**Month 3-6** - lungs appear glandular, end month 6 alveolar cells type 2 appear and begin to secrete surfactant.

**Month 7** - respiratory bronchioles proliferate and end in alveolar ducts and sacs.



Modified from Dilly SA. Thorax. 1984 Oct;39(10):733-42. PMID: 649  
 (/embryology/index.php/File:Lung\_alveoli\_de

Note - the sequence is important rather than the actual timing, which is variable in the existing literature.

## Human Lung Stages

Lung Stage	Human	Features	Vascular
Embryonic	week 4 to 5	lung buds originate as an outgrowth from the ventral wall of the foregut where lobar division occurs	extra pulmonary artery then lobular artery
Pseudoglandular	week 5 to 17	conducting epithelial tubes surrounded by thick mesenchyme are formed, extensive airway branching	Pre-acinar arteries
Canicular	week 16 to 25	bronchioles are produced, increasing number of capillaries in close contact with cuboidal epithelium and the beginning of alveolar epithelium development	Intra-acinar arteries
Saccular	week 24 to 40	alveolar ducts and air sacs are developed	alveolar duct arteries
Alveolar	late fetal to 8 years	secondary septation occurs, marked increase of the number and size of capillaries and alveoli	alveolar capillaries

embryonic stage (/embryology/index.php/Respiratory\_System\_Development#Embryonic\_stage) - pseudoglandular stage  
(/embryology/index.php/Respiratory\_System\_Development#Pseudoglandular\_stage) - canalicular stage  
(/embryology/index.php/Respiratory\_System\_Development#Canalicular\_stage) - saccular stage  
(/embryology/index.php/Respiratory\_System\_Development#Saccular\_stage) - alveolar stage  
(/embryology/index.php/Respiratory\_System\_Development#Alveolar\_stage) **Links:** Species Stage Comparison  
(/embryology/index.php/Template:Lung\_stage\_table2|respiratory (/embryology/index.php/Respiratory\_System\_Development))



**Lung Stages - timing, airway and vascular development<sup>[7]</sup>****Stages****Embryonic**  
4-7 weeks**Pseudoglandular**  
5-17 weeks**Canalicular**  
16-26 weeks**Saccular**  
24 weeks - term**Alveolarization**  
36 weeks - ~21 years**Airways**

Trachea

Bronchi (~10)

Bronchioles (~4)

Respiratory  
bronchioles (4)

Bronchioalveolar duct junction

Alveolar ducts (4)

Saccule (1)

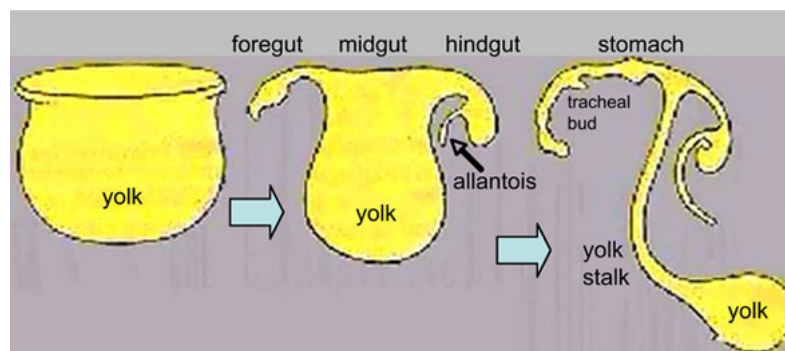
Alveoli

**Arteries / Capillaries****Extrapulmonary artery**  
34 days**Lobular artery**  
44 days**Pre-acinar arteries**  
(conventional +  
supernumeraries)  
5-17 weeks**Intra-acinar arteries**  
18-25 weeks**Alveolar duct arteries**  
25 weeks - 18 months postnatal**Microvascular maturation**  
36 weeks - ~21 years**Alveolar Capillaries**  
36 weeks - ~21 years

(/embryology/index.php/File:Human\_lung\_stages\_01.jpg)

**Embryonic**

Week 4 to 5 - lung buds originate as an outgrowth from the ventral wall of the foregut where lobar division occurs.

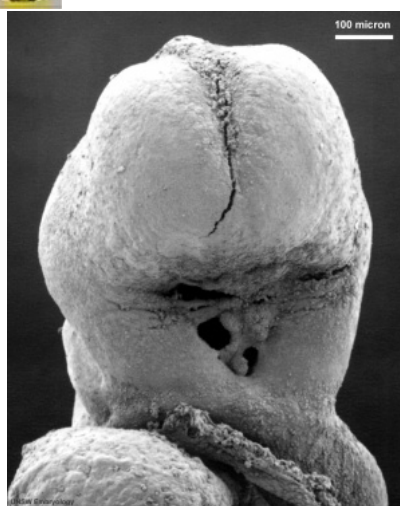


(/embryology/index.php/Endoderm\_Development\_Movie)



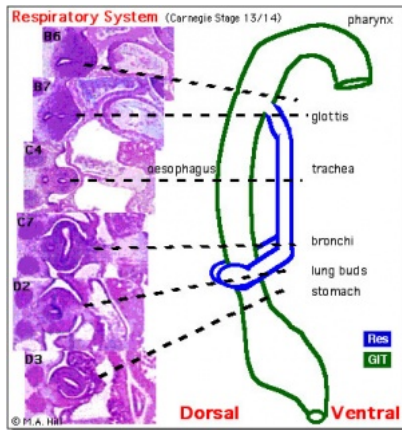
(/embryology/index.php/File:Stage11\_bf9.jpg)

Stomodeum (Week 4, stage 11, GA (/embryology/index.php/Gestational\_Age) week 6)



(/embryology/index.php/File:Stage11\_sem4.jpg)

Buccopharyngeal membrane (Week 4, stage 11, GA (/embryology/index.php/Gestational\_Age) week 6)

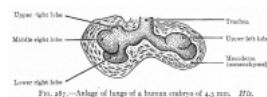
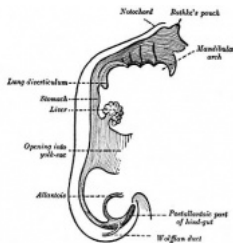


(/embryology/index.php/File:Stage14\_respiratory\_tract.jpg)

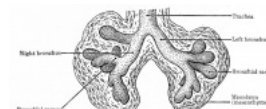
(Week 5, stage 14, **GA** (/embryology/index.php/Gestational\_Age) week 7)

- **week 4 - 5**
- Endoderm - tubular ventral growth from foregut pharynx.
- Mesoderm - mesenchyme of lung buds.
- Intraembryonic coelom - pleural cavities elongated spaces connecting pericardial and peritoneal spaces.

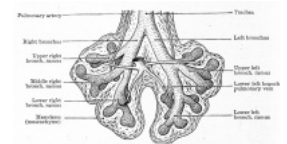
Stage 13 - Trachea and Lung buds (/embryology/index.php/Stage\_13\_MRI\_Movie\_1) (MRI sagittal sections)



(/embryology/index.php/File:Bailey287.jpg)



(/embryology/index.php/File:Bailey288.jpg)



(/embryology/index.php/File:Bailey289.jpg)

(/embryology/index.php/File:Gray0982a.jpg)

Week 4

Week 4-5 (Stage 12)

(/embryology/index.php/Carnegie\_stage\_12)

to 13

(/embryology/index.php/Carnegie\_stage\_13))

Week 5 (Stage 15)

(/embryology/index.php/Carnegie\_stage\_15)

to 16

(/embryology/index.php/Carnegie\_stage\_16))

Week 6 (Stage 16)

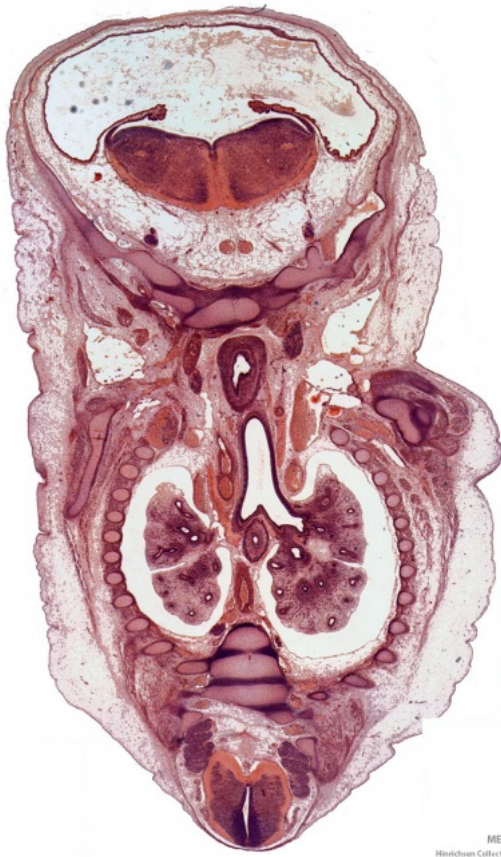
(/embryology/index.php/Carnegie\_stage\_16)

to 17

(/embryology/index.php/Carnegie\_stage\_17))

## Pseudoglandular stage

- **week 5 - 17**
- tubular branching of the human lung airways continues
- by 2 months all segmental bronchi are present.
- lungs have appearance of a glandlike structure.
- stage is critical for the formation of all conducting airways.
  - lined with **tall columnar epithelium**
  - more distal structures are lined with **cuboidal epithelium**.
- Pulmonary neuroendocrine cells (<https://www.ncbi.nlm.nih.gov/pmc/articles/PMC5733720/figure/F1/>) (PNECs) - develop in late embryonic to early fetal period, later in mid-fetal period clusters of these cells form [neuroepithelial bodies (NEBs) in airway epithelium. May stimulate mitosis to increase branching, secrete 2 peptides - gastrin-releasing peptide (GRP) and calcitonin gene related peptide (CGRP).



(/embryology/index.php/File:ME54\_001.jpg)

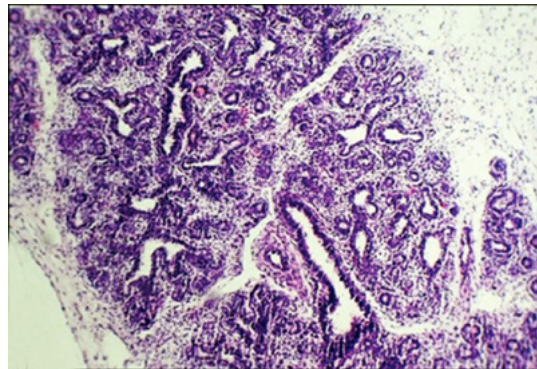
Week 8

(This is what a gland looks like. (/embryology/index.php/File:Parotid\_gland\_histology\_06.jpg))

#### Pseudoglandular and Canalicular Stages [Expand]

### Canalicular stage

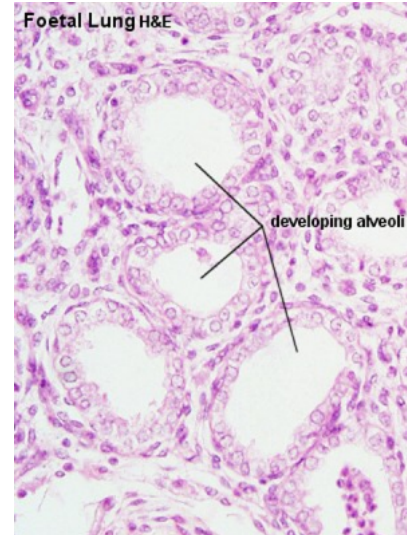
- **week 16 - 24**
- Lung morphology changes dramatically
- differentiation of the pulmonary epithelium results in the first formation of the future air-blood tissue barrier.
- **Surfactant** synthesis and the canalization of the lung parenchyma by capillaries begins.
- future gas exchange regions can be distinguished from the future conducting airways of the lungs.



(/embryology/index.php/File:Lung\_-\_canalicular\_stage.jpg)

### Saccular stage

- **week 24 to near term.**
- most peripheral airways form widened "airspaces", termed **saccules**.
- saccules widen and lengthen the airspace (by the addition of new generations).
- future gas exchange region expands significantly.
- Fibroblastic cells also undergo differentiation, they produce extracellular matrix, collagen, and elastin.
  - May have a role in epithelial differentiation and control of **surfactant secretion**.
- Alveolar Cells Type II (Type II pneumocytes)
  - begin to secrete **surfactant**, levels of secretion gradually increase to term.
  - allows alveoli to remain inflated
- Vascular tree - also grows in length and diameter during this time.



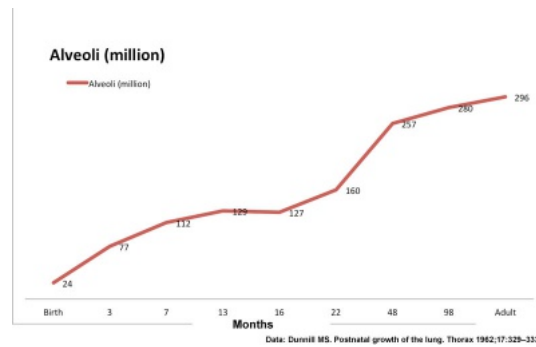
(/embryology/index.php/File:Fetal\_lung\_histology\_01.jpg)

Fetal lung histology

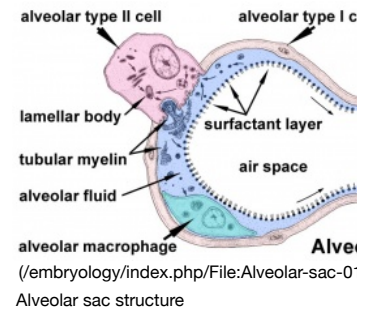


## Alveolar stage

- late fetal to 8 years.
- Secondary septum
- Expansion of gas exchange alveoli, vascular beds (capillaries), lymphatics and innervation.
- Postnatal lung, with **alveoli** forming.



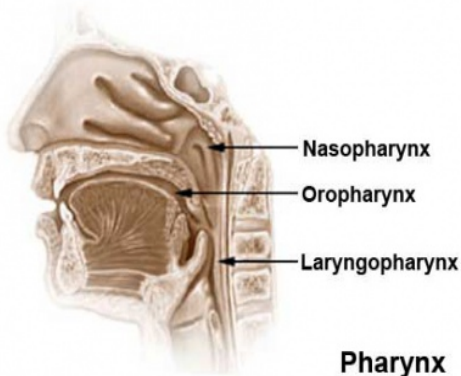
(/embryology/index.php/File:Postnatal\_alveoli\_number.jpg)



Alveolar sac structure

## Upper Respiratory Tract

**Foregut Development** - from the oral cavity the next portion of the foregut is initially a single gastrointestinal (oesophagus) and respiratory (trachea) common tube, the pharynx which lies behind the heart. Note that the respiratory tract will form from a ventral bud arising at this level.

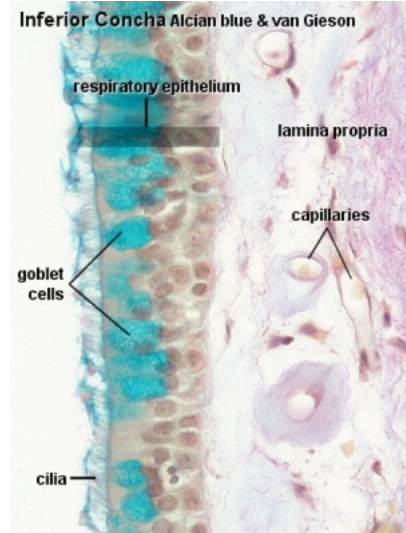


- part of **foregut** development (Oral cavity, Pharynx (esophagus, trachea), Respiratory tract, Stomach)
- anatomically the nose, nasal cavity and the pharynx
- pharynx** forms a major arched cavity within the pharyngeal arches (**MH** - pharyngeal arches will be described in BGD head development lecture).
- palate** - development for mammals, allows breathing while feeding.

Note - Specialised **olfactory epithelium** for smell, a small region located in roof of nasal cavity.

### Pharynx

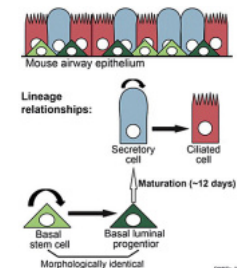
(/embryology/index.php/File:Pharynx.jpg)



(/embryology/index.php/File:Respiratory\_histology\_11.jpg)

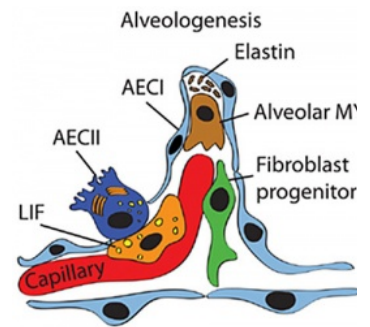
### Respiratory epithelium

- pseudo-stratified
- ciliated cells
- goblet cells
- basal cells

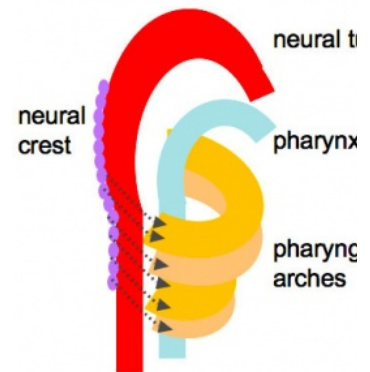


(/embryology/index.php/File:Respiratory\_epithelium\_cells\_cartoon.jpg)

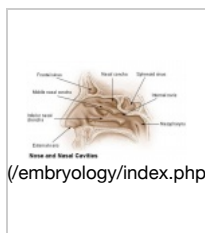
Respiratory epithelium development



Secondary septae  
PMID: 21  
(/embryology/index.php/File:Respiratory\_sec  
Secondary septum



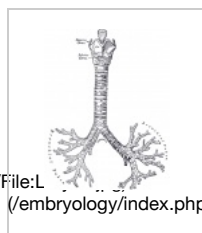
(/embryology/index.php/File:Head\_arches\_c  
Foregut cartoon



Nasal cavities



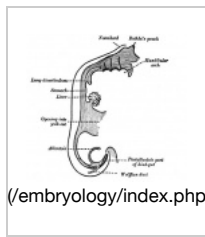
Larynx



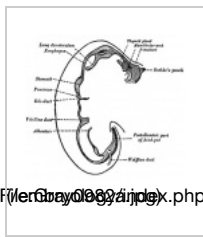
Adult upper respiratory tract conducting system

## Additional Information - Histology[Expand]

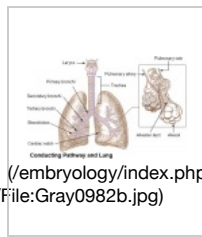
## Lower Respiratory Tract



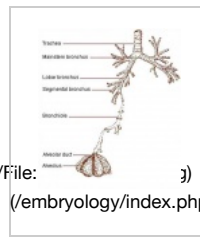
week 4 early respiratory endodermal bud



week 4 later ventral endoderm growth

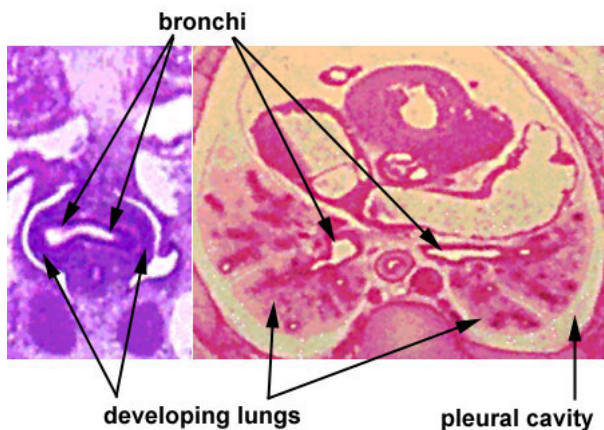


lower respiratory tract



conducting system bronchi to lungs

## stage 13 stage 22



(/embryology/index.php/File:Lung\_development\_stage13-22.jpg)

Stage 13 (Week 4-5) (/embryology/index.php/Respiratory\_System\_-\_Carnegie\_Stage\_13)

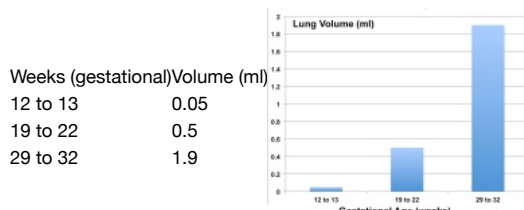
- lung buds ( endoderm epithelial tubes) grow/push into mesenchyme covered with pleural cells (lung border)
- generates a tree-like network by repeated:
  1. elongation
  2. terminal bifurcation
  3. lateral budding

Growth initially of branched "conducting" system of bronchial tree, followed by later development of the "functional units" of the alveoli.

## Additional Information - Histology[Expand]

## Fetal Lung Volume

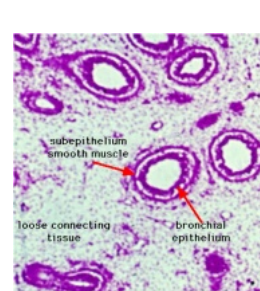
Each human lung volume as determined by ultrasound and matched to gestational age<sup>[9]</sup>



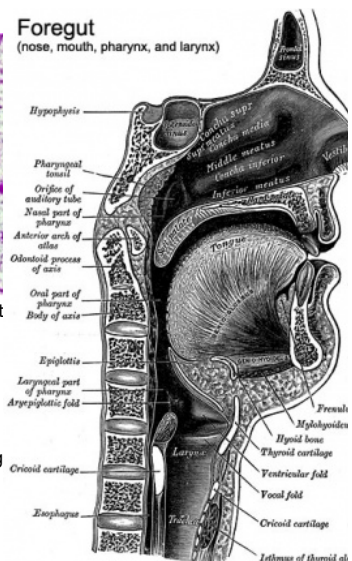
(/embryology/index.php/File:Lung\_volume\_graph\_01.jpg)

## Pleural Cavity

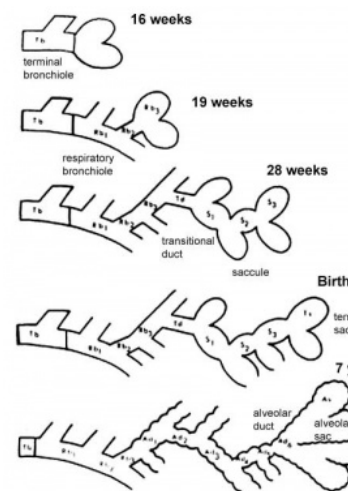
- anatomical body cavity in which the lungs develop and lie.
- pleural cavity forms in the **lateral plate mesoderm** as part of the early single **intraembryonic coelom**.
- This cavity is initially continuous with pericardial and peritoneal cavities and form initially as two narrow canals.
  - later becomes separated by folding (pleuropericardial fold, pleuroperitoneal membrane) and the later formation of the diaphragm.
- pleuropericardial fold** - (pleuropericardial membrane) An early embryonic fold which restricts the communication between pleural cavity and pericardiac cavity, contains both the cardinal vein and phrenic nerve.
- pleuroperitoneal membrane** - An early embryonic membrane that forms inferiorly at the septum transversum to separate peritoneal cavity from pleural cavity.



(/embryology/index.php/File:St



(/embryology/index.php/File:Pharynx\_cartoon Pharynx)



Modified from Dilly SA. Thorax. 1984 Oct;39(10):733-42. PMID: 649  
 (/embryology/index.php/File:Lung\_alveoli\_de Lung alveoli development cartoon)

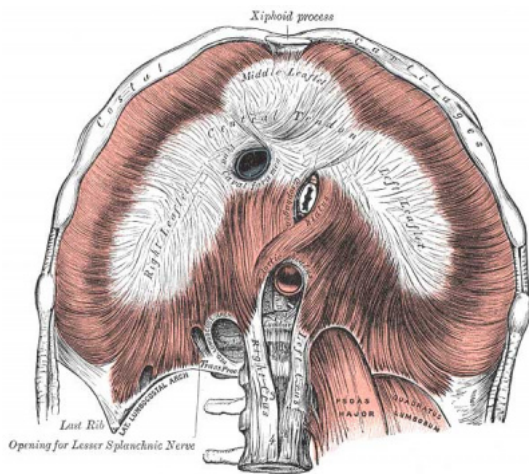


## Pleura

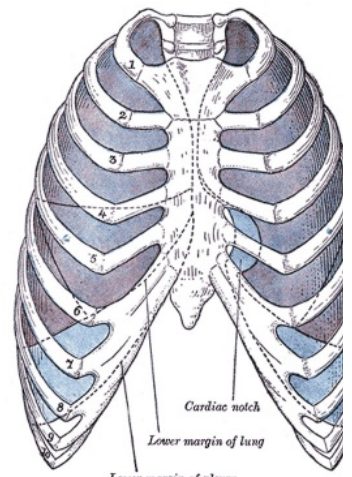
- **serous membrane** covers the surface of the lung and the spaces between the lobes.
- arranged as a closed invaginated sac.
- two layers (**pulmonary, parietal**) continuous with each other, the potential space between them is the **pleural cavity**.
- filled with pleural fluid produced by parietal pleura and reabsorbed by parietal pleural lymphatics.<sup>[10]</sup>
- excess fluid - pleural effusion.

## Diaphragm

Adult Diaphragm.



(/embryology/index.php/File:Gray0391.jpg)

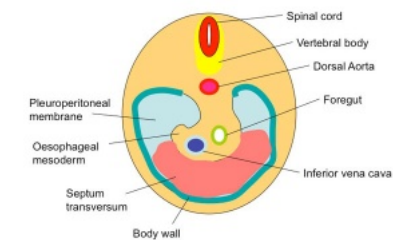


(/embryology/index.php/File:Gray0965.jp

pleura

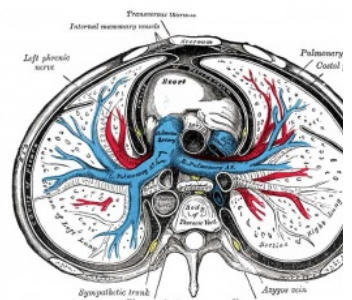
- Not respiratory tract but musculoskeletal development, there are **5 embryonic elements** that contribute to the diaphragm.
- Innervation of the human diaphragm is by the **phrenic nerves**

### Developing Diaphragm



1. septum transversum- central tendon
2. 3rd to 5th somite- musculature of diaphragm
3. ventral pleural sac- connective tissue
4. mesentery of oesophagus- connective tissue around oesophagus and IVC
5. pleuroperitoneal membranes- connective tissue around central tendon

(/embryology/index.php/File:Diaphragm\_components.jpg)



(/embryology/index.php/File:Gray0968.jp

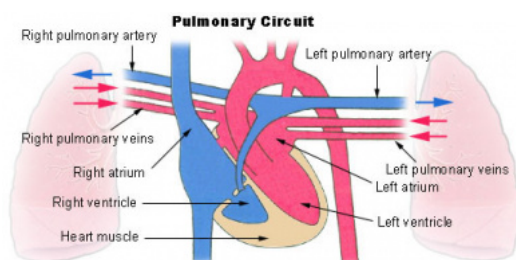
pleura

- Phrenic Nerves - arising from the same segmental levels as the diaphragm skeletal muscles, segmental levels C3 to C5.
- The paired phrenic nerves are **mixed nerves**
  - motor neurons for the diaphragm
  - sensory nerves for other abdominal structures (mediastinum, pleura, liver, gall bladder).

**Bochdalek hernia** - most common on the posterior left side (85%). Failure of the pleuroperitoneal foramen (foramen of Bochdalek) to close allows viscera into thorax. Intestine, stomach or spleen can enter the pleural cavity, compressing the lung.

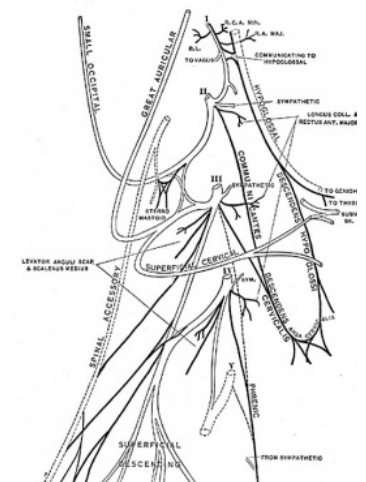
## Pulmonary Circulation

- the pulmonary system not "functional" until after birth
- pulmonary arteries - 6th aortic arch arteries
- pulmonary veins - are incorporated into the left atrium wall
- bronchial arteries - branches from dorsal aorta



(/embryology/index.php/File:Pulmonary\_circulation\_cartoon.jpg)

Pulmonary circulation



(/embryology/index.php/File:Gray0804.jp

Adult Cervical Plexus (phrenic nerve shown right)

## Fetal

### Fetal Respiratory Movements

- Fetal respiratory movements (FRM) or Fetal breathing movements (FBM) are regular muscular contractions occurring in the third trimester.
- preparing the respiratory muscular system for neonatal function.
- may also have a role in late lung development.

## Postnatal

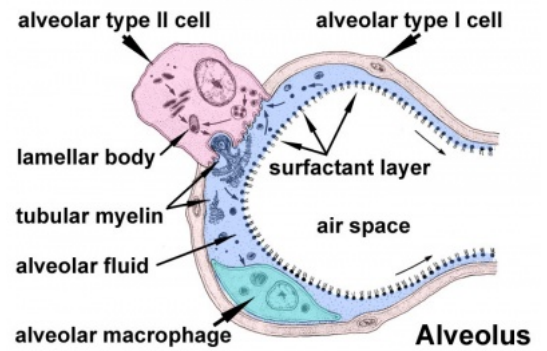
### The First Breath

- The respiratory system does not carry out its physiological function (gas exchange) prenatally and remain entirely fluid-filled until birth.
- At birth, fluid in the upper respiratory tract is expired and fluid in the lung aveoli is rapidly absorbed this event has also been called "dewatering of the lung".
  - The lung epithelia has to now rapidly change from its prenatal secretory function to that of fluid absorption.

The exchange of lung fluid for air leads to:

- fall in pulmonary vascular resistance
- increase in pulmonary blood flow
- thinning of pulmonary arteries (stretching as lungs increase in size)
- blood fills the alveolar capillaries

In the heart - pressure in the right side of the heart decreases and pressure in the left side of the heart increases (more blood returning from pulmonary).

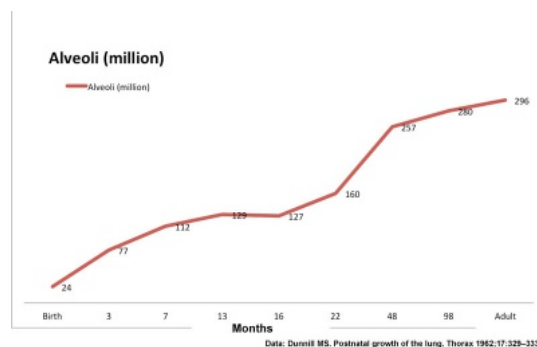


(/embryology/index.php/File:Alveolar-sac-01.jpg)

Alveolar sac structure

## Alveoli

- At birth about 15% of adult alveoli number have formed
  - 20 - 50 million to in the adult about 300 million.
- remaining subdivisions develop in the first few postnatal years



Date: Durell MS. Postnatal growth of the lung. Thorax 1962;17:329-335.

(/embryology/index.php/File:Postnatal\_alveoli\_number.jpg)

Human Alveoli Number

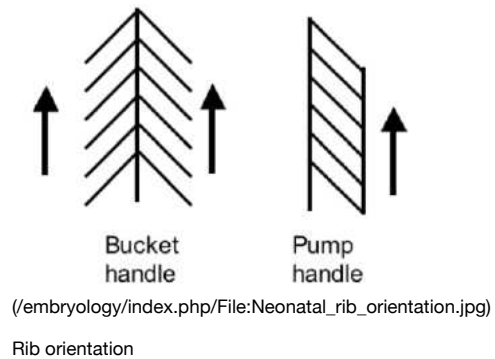
## Respiratory Rate

- neonatal rate is higher (30-60 breaths/minute) than adult (12-20 breaths/minute).
- tachypnea - (Greek, rapid breathing) an increased respiratory rate of greater than 60 breaths/minute in a quiet resting baby

Age	Rate (breaths/minute)
Infant (birth - 1 year)	30 - 60
Toddler (1 - 3 years)	24 - 40
Preschool (3 - 6 years)	22 - 34
School age (6 - 12 years)	18 - 30
Adolescent (12 - 18 years)	12 - 16

## Rib Orientation

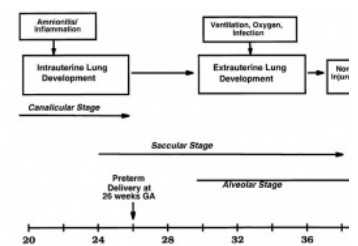
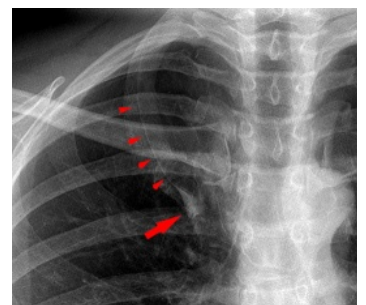
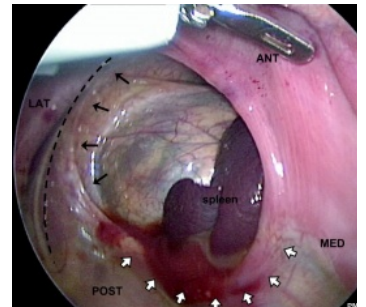
- Infant rib - is virtually **horizontal**, allowing diaphragmatic breathing only.
- Adult rib - is **oblique** (both anterior and lateral views), allows for pump-handle and bucket handle types of inspiration.



## Respiratory Tract Abnormalities

Respiratory System - Abnormalities (/embryology/index.php/Respiratory\_System\_-\_Abnormalities)

- **Meconium Aspiration Syndrome** - (MAS) Meconium is the gastrointestinal contents that accumulate in the intestines during the fetal period. Fetal stress in the third trimester, prior to/at/ or during parturition can lead to premature meconium discharge into the amniotic fluid and subsequent ingestion by the fetus and damage to respiratory function. Damage to placental vessels meconium myonecrosis may also occur.
- **Newborn Respiratory Distress Syndrome** - (Hyaline Membrane Disease) membrane-like substance from damaged pulmonary cells, absence of surfactant, if prolonged can be irreversible, intrauterine asphyxia, prematurity and maternal diabetes medline plus (<http://www.nlm.nih.gov/MEDLINEPLUS/ency/article/001563.htm>) | eMedicine (<http://www.medscape.com/article/976034-overview>)
- **Tracheoesophageal Fistula** - Tracheo-Oesophageal Fistula, Oesophageal Atresia - Oesophageal Atresia with or without tracheo-oesophageal fistula (/embryology/index.php/F#fistula) **Fistula** - an abnormal communication between 2 structures (organs, vessels, cavities) that do not normally connect.
- **Lobar Emphysema** (Overinflated Lung) - There is an overinflated left upper lobe There is a collapsed lower lobe The left lung is herniating across the mediastinum
- **Congenital Diaphragmatic Hernia** - (1 in 3,000 live births) Failure of the pleuroperitoneal foramen (foramen of Bochdalek) to close (left side), allows viscera into thorax -intestine, stomach or spleen can enter the pleural cavity, compressing the lung. rare (Morgagni hernia) -an opening in the front of the diaphragm. Congenital Diaphragmatic Hernia (/embryology/index.php/Respiratory\_System\_-\_Abnormalities#Congenital\_Diaphragmatic\_Hernia) | GeneReviews (<http://www.ncbi.nlm.nih.gov/books/NBK1359>)
- **Azygos Lobe** - Common condition (0.5% of population). The right lung upper lobe expands either side of the posterior cardinal. There is also some course variability of the phrenic nerve in the presence of an azygos lobe.
- **Congenital Laryngeal Webs** - Laryngeal abnormality due to embryonic (week 10) incomplete recanalization of the laryngotracheal tube during the fetal period. Rare abnormality occurring mainly at the level of the vocal folds (glottis).
- **Hyaline Membrane Disease** - (Newborn Respiratory Distress Syndrome) a membrane-like substance from damaged pulmonary cells.
- **Bronchopulmonary Dysplasia** - A chronic lung disease which can occur following premature birth and related lung injury. Most infants who develop BPD are born more than 10 weeks before their due dates, weigh less than 1,000 grams (about 2 pounds) at birth, and have breathing problems.
- **Asthma** - Flow limitation during tidal expiration in early life significantly associated with the development of physician-diagnosed asthma by the age of 2 years. Infants with abnormal lung function soon after birth may have a genetic predisposition to asthma or other airway abnormalities that predict the risk of subsequent lower respiratory tract illness.
- **Cystic Fibrosis** - Inherited disease of the mucus and sweat glands, causes mucus to be thick and sticky. Clogging the lungs, causing breathing problems and encouraging bacterial grow. (Covered elsewhere in the course)
- **Vascular development** - During both the prenatal and postnatal development, impaired angiogenesis from a number of causes can decrease alveolarization of the lung. (decreased VEGF expression, increased oxygen tension, inflammatory cytokines, other adverse stimuli)



## Environmental Factors

The lung is most sensitive to environmental effects given the long timecourse of development, including postnatal, multi-system origins, immune interactions, and our growing understanding of the effects of the prenatal environment on adult health (DOHAD (/embryology/index.php/Abnormal\_Development\_-\_Developmental\_Origins\_of\_Health\_and\_Disease)). Below are some recent reviews of related topics.(not part of today's lecture presentation)

- Maternal alcohol (/embryology/index.php/Abnormal\_Development\_-\_Fetal\_Alcohol\_Syndrome)<sup>[4]</sup>
- Maternal obesity<sup>[11]</sup>
- Maternal diabetes<sup>[12]</sup>
- Maternal smoking<sup>[13]</sup>
- Chronic hypoxaemia<sup>[14]</sup>
- Environmental chemicals<sup>[15]</sup>

## Respiratory Terms

Respiratory (/embryology/index.php/Respiratory\_System\_Development) Terms (expand to view) [Expand]



Other Terms Lists [Expand]

## Additional Information

Additional Information - Content shown under this heading is not part of the material covered in this class. It is provided for those students who would like to know about some concepts or current research in topics related to the current class page.

Developing Rat Lung (3D view) [Expand]

Respiratory Quiz (/embryology/index.php/Respiratory\_Quiz)

## Lung Development - Respiratory Health and Disease

Arigiani M, Spinelli AM, Liguoro I & Cogo P. (2018). Nutrition and Lung Growth. *Nutrients* , 10, . PMID: 30021997 (<https://www.ncbi.nlm.nih.gov/pubmed/30021997>) DOI (<https://doi.org/10.3390/nu10070919>).

Finke I, de Jongste JC, Smit HA, Wijga AH, Koppelman GH, Vonk J, Brunekreef B & Gehring U. (2018). Air pollution and airway resistance at age 8 years - the PIAMA birth cohort study. *Environ Health* , 17, 61. PMID: 30016982 (<https://www.ncbi.nlm.nih.gov/pubmed/30016982>) DOI (<https://dx.doi.org/10.1186/s12940-018-0407-9>).

Stocks J, Hislop A & Sonnappa S. (2013). Early lung development: lifelong effect on respiratory health and disease. *Lancet Respir Med* , 1, 728-42. PMID: 24429276 (<https://www.ncbi.nlm.nih.gov/pubmed/24429276>) DOI ([https://dx.doi.org/10.1016/S2213-2600\(13\)70118-8](https://dx.doi.org/10.1016/S2213-2600(13)70118-8)).

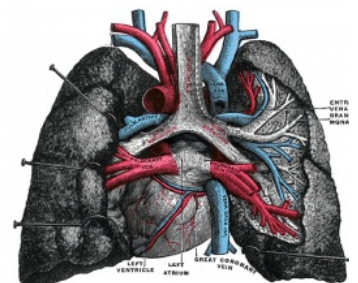
Merkus PJ. (2003). Effects of childhood respiratory diseases on the anatomical and functional development of the respiratory system. *Paediatr Respir Rev* , 4, 28-39. PMID: 1261 (<https://www.ncbi.nlm.nih.gov/pubmed/12615030>)

Grays - Respiratory Images[Expand]

Respiratory Histology [Expand]

## References

- Ardini-Poleske ME, Clark RF, Ansong C, Carson JP, Corley RA, Deutsch GH, Hagood JS, Kaminski N, Mariani TJ, Potter SS, Pryhuber GS, Warburton D, Whitsett JA, Palmer SM & Ambalavanan N. (2017). LungMAP: The Molecular Atlas of Lung Development Program. *Am. J. Physiol. Lung Cell Mol. Physiol.* , 313, L733-L740. PMID: 28798251 (<https://www.ncbi.nlm.nih.gov/pubmed/28798251>) DOI (<https://dx.doi.org/10.1152/ajplung.00139.2017>).
- Schittny JC. (2017). Development of the lung. *Cell Tissue Res.* , 367, 427-444. PMID: 28144783 (<https://www.ncbi.nlm.nih.gov/pubmed/28144783>) DOI (<https://dx.doi.org/10.1007/s00441-016-2545-0>).
- Stabler CT & Morrisey EE. (2017). Developmental pathways in lung regeneration. *Cell Tissue Res.* , 367, 677-685. PMID: 27957616 (<https://www.ncbi.nlm.nih.gov/pubmed/27957616>) DOI (<https://dx.doi.org/10.1007/s00441-016-2537-0>).
- Gauthier TW & Brown LA. (2017). In utero alcohol effects on foetal, neonatal and childhood lung disease. *Paediatr Respir Rev* , 21, 34-37. PMID: 27613232 (<https://www.ncbi.nlm.nih.gov/pubmed/27613232>) DOI (<https://dx.doi.org/10.1016/j.prrv.2016.08.006>).
- Herriges M & Morrisey EE. (2014). Lung development: orchestrating the generation and regeneration of a complex organ. *Development* , 141, 502-13. PMID: 24449833 (<https://www.ncbi.nlm.nih.gov/pubmed/24449833>) DOI (<https://dx.doi.org/10.1242/dev.098186>).
- Knudsen L & Ochs M. (2018). The micromechanics of lung alveoli: structure and function of surfactant and tissue components. *Histochem. Cell Biol.* , 150, 661-676. PMID: 30390118 (<https://www.ncbi.nlm.nih.gov/pubmed/30390118>) DOI (<https://dx.doi.org/10.1007/s00418-018-1747-9>).
- Schittny JC. (2018). How high resolution 3-dimensional imaging changes our understanding of postnatal lung development. *Histochem. Cell Biol.* , 150, 677-691. PMID: 30390117 (<https://www.ncbi.nlm.nih.gov/pubmed/30390117>) DOI (<https://dx.doi.org/10.1007/s00418-018-1749-7>).
- Yamamoto M, Wilting J, Abe H, Murakami G, Rodríguez-Vázquez JF & Abe SI. (2018). Development of the pulmonary pleura with special reference to the lung surface morphology: a study using human fetuses. *Anat Cell Biol.* , 51, 150-157. PMID: 30310706 (<https://www.ncbi.nlm.nih.gov/pubmed/30310706>) DOI (<https://dx.doi.org/10.5115/acb.2018.51.3.150>).
- Peralta CF, Cavoretto P, Csapo B, Falcon O & Nicolaides KH. (2006). Lung and heart volumes by three-dimensional ultrasound in normal fetuses at 12-32 weeks' gestation. *Ultrasound Obstet Gynecol* , 27, 128-33. PMID: 16388511 (<https://www.ncbi.nlm.nih.gov/pubmed/16388511>) DOI (<https://dx.doi.org/10.1002/uog.2670>).
- Miserochchi G. (1997). Physiology and pathophysiology of pleural fluid turnover. *Eur. Respir. J.* , 10, 219-25. PMID: 9032518 (<https://www.ncbi.nlm.nih.gov/pubmed/9032518>)
- McGillick EV, Lock MC, Orgeig S & Morrison JL. (2017). Maternal obesity mediated predisposition to respiratory complications at birth and in later life: understanding the implications of the obesogenic intrauterine environment. *Paediatr Respir Rev* , 21, 11-18. PMID: 27818069 (<https://www.ncbi.nlm.nih.gov/pubmed/27818069>) DOI (<https://dx.doi.org/10.1016/j.prrv.2016.10.003>).
- Azad MB, Moyce BL, Guillemette L, Pascoe CD, Wicklow B, McGavock JM, Halayko AJ & Dolinsky VW. (2017). Diabetes in pregnancy and lung health in offspring: developmental origins of respiratory disease. *Paediatr Respir Rev* , 21, 19-26. PMID: 27665512 (<https://www.ncbi.nlm.nih.gov/pubmed/27665512>) DOI (<https://dx.doi.org/10.1016/j.prrv.2016.08.007>).
- McEvoy CT & Spindel ER. (2017). Pulmonary Effects of Maternal Smoking on the Fetus and Child: Effects on Lung Development, Respiratory Morbidities, and Life Long Lung Health. *Paediatr Respir Rev* , 21, 27-33. PMID: 27639458 (<https://www.ncbi.nlm.nih.gov/pubmed/27639458>) DOI (<https://dx.doi.org/10.1016/j.prrv.2016.08.005>).
- McGillick EV, Orgeig S, Giussani DA & Morrison JL. (2017). Chronic hypoxaemia as a molecular regulator of fetal lung development: implications for risk of respiratory complications at birth. *Paediatr Respir Rev* , 21, 3-10. PMID: 27692868 (<https://www.ncbi.nlm.nih.gov/pubmed/27692868>) DOI (<https://dx.doi.org/10.1016/j.prrv.2016.08.011>).
- Miller MD & Mark MA. (2018). Impact of environmental chemicals on lung development. *Environ. Health Perspect.* , 118, 1155-1165. PMID: 29811111 (<https://www.ncbi.nlm.nih.gov/pubmed/29811111>) DOI (<https://dx.doi.org/10.1289/EHP1111>).



(/embryology/index.php/File:Gray0971.jp  
adult lungs

15. Miller MW & Marty MR. (2010). Impact of environmental chemicals on lung development. *Environ. Health Perspect.* , 118, 1155-64. PMID: 20444669 (<https://www.ncbi.nlm.nih.gov/pubmed/20444669>) DOI (<https://dx.doi.org/10.1289/ehp.0901856>).
16. Kleven GA & Ronca AE. (2009). Prenatal behavior of the C57BL/6J mouse: a promising model for human fetal movement during early to mid-gestation. *Dev Psychobiol* , 51, 84-94. PMID: 18980217 (<https://www.ncbi.nlm.nih.gov/pubmed/18980217>) DOI (<https://dx.doi.org/10.1002/dev.20348>).

## Glossary Links

Glossary (/embryology/index.php/Glossary\_of\_terms): A (/embryology/index.php/A) | B (/embryology/index.php/B) | C (/embryology/index.php/C) | D (/embryology/index.php/D) | E (/embryology/index.php/E) | F (/embryology/index.php/F) | G (/embryology/index.php/G) | H (/embryology/index.php/H) | I (/embryology/index.php/I) | J (/embryology/index.php/J) | K (/embryology/index.php/K) | L (/embryology/index.php/L) | M (/embryology/index.php/M) | N (/embryology/index.php/N) | O (/embryology/index.php/O) | P (/embryology/index.php/P) | Q (/embryology/index.php/Q) | R (/embryology/index.php/R) | S (/embryology/index.php/S) | T (/embryology/index.php/T) | U (/embryology/index.php/U) | V (/embryology/index.php/V) | W (/embryology/index.php/W) | X (/embryology/index.php/X) | Y (/embryology/index.php/Y) | Z (/embryology/index.php/Z) | Numbers (/embryology/index.php/Numbers) | Symbols (/embryology/index.php/Symbols) | Term Link (/embryology/index.php/Term\_Link)

Cite this page: Hill, M.A. (2019, February 24) **Embryology SH Lecture - Respiratory System Development**. Retrieved from [https://embryology.med.unsw.edu.au/embryology/index.php/SH\\_Lecture\\_-\\_Respiratory\\_System\\_Development](https://embryology.med.unsw.edu.au/embryology/index.php/SH_Lecture_-_Respiratory_System_Development) ([https://embryology.med.unsw.edu.au/embryology/index.php/SH\\_Lecture\\_-\\_Respiratory\\_System\\_Development](https://embryology.med.unsw.edu.au/embryology/index.php/SH_Lecture_-_Respiratory_System_Development))

What Links Here? ([https://embryology.med.unsw.edu.au/embryology/index.php?title=Special:WhatLinksHere/SH\\_Lecture\\_-\\_Respiratory\\_System\\_Development](https://embryology.med.unsw.edu.au/embryology/index.php?title=Special:WhatLinksHere/SH_Lecture_-_Respiratory_System_Development))

© Dr Mark Hill 2019, **UNSW Embryology** ISBN: 978 0 7334 2609 4 - UNSW CRICOS Provider Code No. 00098G

This page was last modified on 24 February 2019, at 19:36.



(//www.mediawiki